

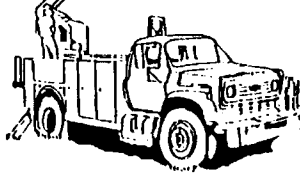
BOARD OF TRUSTEES

Kevan Kimball, Pres.....Myers/Big Horn
 Steve Nile, V.Pres.....Howard Flat
 Jim DeCock, Sec.-Treas....Hysham Rural
 Joe Schiffer.....Rosebud/Cartersville
 Arlo Jensen.....Town of Hysham
 Lee Howard.....Sarpy
 Lance Moreland.....Ingomar/Hammond

OFFICE HOURS

Monday through Friday
 8 a.m. to 5 p.m.
 Closed at noon
406-342-5521

**MID-YELLOWSTONE
 ELECTRIC
 COOPERATIVE, INC.**



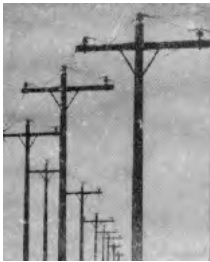
OFFICE PERSONNEL

Jason Brothen.....Manager
 Marj Cunningham.....Office Mgr
 Karen Morales.....Billing Clerk
 Patti Lang.....Cashier

LINE PERSONNEL

Ken Rolandson.....Foreman
 Rick Lewis.....Sub Foreman
 Daren Reeder.....Lineman
 Trent Perkins.....Appr.Lineman
 Shane Freese.....Appr.Lineman
 Cole Jankovsky.....Appr.Lineman

P.O. BOX 386, HYSHAM, MT 59038



ALONG THESE LINES . . .

by Jason Brothen



Rate Changes For MYEC Members

At your annual meeting in March, the staff and board reported on numerous topics related to the cooperative. One topic that always peaks the interest of our membership is rate discussion.

During the annual meeting, we discussed the steps for making rate changes. We have become members of a new Generation and Transmission Cooperative (G&T), we have full access to our Western Area Power Administration (WAPA) allocated hydroelectric power, and our operational needs are much different now than they were over the past 10 years.

This year the board and staff have worked hard to ensure we are allocating costs, balancing budgets, and maintaining our workforce and electrical grid. This will continue every month so our membership receives the most reliable and affordable service we can offer.

This rate change is different than ever before. At the July board meeting, the board voted unanimously to decrease rates for the cooperative members. This new rate structure is easier to understand and it allows for future rate making to be more flexible and adjust with the power markets.

Farm/Residential/Public Buildings-Single Phase rate maintains a fixed charge of \$38.50, with all kilowatt hours at \$.099.

(Continued on page 5)

This institution is an equal opportunity provider and employer.

Rate Changes for MYEC Members (continued)

Seasonal accounts have a \$33.75 fixed charge and all kilowatt hours at \$.099.

The accounts who fall under our **General Service-Single Phase** rate have a base of \$38.50 and a kilowatt hour charge of \$.099.

For our **General Service-Three Phase** members, the fixed charge is \$58.00 with all kilowatts at \$.108.

The **Irrigation** rates will also be decreasing. Due to our billing cycle for irrigation, we will not change this rate until January 1, 2018. We will post and write more about the irrigation rate this fall in another article.

As for all the other rates, the board voted to make an immediate change to the billing for the MYEC members. You will see this change on the bill you receive on September 1st.

MYEC has been working on a new billing system to better serve the membership. We will also offer an online bill pay with an app for your smartphone as well.

After September, the look of the bills will change. And, please note, that because of the new billing system being implemented in September, your statement will arrive later in the first week of October. This should be a one time occurrence. Thank you ahead of time for your patience!

Be Safe In Your Home

- **Watch Cord Placement:** Extension cords should not be placed under rugs or heavy furniture, tacked up or coiled while in use.
- **Get Grounded:** All major appliances should be grounded. Check your ground fault circuit interrupters regularly.
- **Give Your Air Heater Some Space:** All air heaters should be placed at least three feet from beds, curtains or anything flammable.
- **Look for UL:** The UL Mark appears on products that have been tested, verified and inspected for safety.

Whether it's on the farm or in the city, there's something inspirational about common folk banding together to work as a community to better their lives. That's what we call the cooperative way...

COOPERATIVES—
businesses people trust.



DON'T FORGET SURGE PROTECTORS!

on your computer, microwave, TV

A \$500 rebate for saving energy...the GSHP way

Your Cooperative has for some years been offering a \$500 rebate for the installation of a ground source heat pump (GSHP) as your home's heating source. Why the heat pump? Your Board of Trustees believes that it operates very efficiently to save you energy dollars. These seven men are not the only believers. The State of Montana also offers an incentive by granting a tax credit for the installation of the GSHP.

Heat pumps are not new. But recent technological developments have made them better. Several of our members added the **An energy-saving idea...** the *air-to-air* heat pump to their homes as this form of heat pump became available. Then along came the ground source heat pump, using heat from the earth instead of heat from the air. Quite a number of our members have now installed the GSHP.

The fact that the GSHP offers a cooling function is a major attraction. How is this possible? The compressor system of a GSHP exchanges heat energy with the earth through a heat exchanger, called a "ground loop." A water solution is circulated through the pipes and the heat pump, channeling heat to and from the unit. During the summer the heat pump works in reverse to cool the building.

For more information go to www.waterfurnace.com.