


# PARK SPARKS

Park Electric Cooperative, Inc.

A Touchstone Energy® Cooperative 

September 2017

## 2016 Luck of the Draw Winners



Name: Noelani Boise  
College: Montana State University  
Degree: Environmental Science and Modern Languages  
Activities: Latin dance, nanny, undergraduate reserach assistant



Name: Zoe Randall  
College: Carroll College, Helena  
Degree: Nursing  
Activities: Park High Student Council, track and field, basketball, FFA, National Honors Society, and lifeguard at the Livingston pool



Name: Rylee Hoyem  
College: MSU, Billings  
Degree: Health Administration  
Activities: Quilting, spending time with friends, and making trips home to the family ranch in the Shields Valley



Name: Michaela Bigham  
College: Health Works Institute  
Degree: Massage Therapy  
Activities: animals, research, massage modality theory, and going on hikes and drives with her dog Chip



Name: Maria Guzman  
College: MSU, Billings  
Degree: Associates in Applied Sciences  
Activities: Camping, hiking, fishing, spending time with family and working on their cabin



Name: Smith Sopp  
College: Penn State University  
Degree: Computer Engineering  
Activities: Snowboarding, painting, playing guitar, and STEM fields advocate



Name: Quentin Lucas  
College: Montana State University  
Degree: Physics & Computer Science  
Activities: Hiking, mountain biking, rock climbing, skiing, playing piano and guitar, writing



Name: Shae Sager  
College: Montana State University  
Degree: Nursing  
Activities: Outdoor recreational activities, working out, and spending time with family and friends

### *Save the date!*

*The Park Electric annual meeting is Friday, October 27th. Registration starts at 10:30, meeting begins at noon. Free meal, \$5 bill credit, prizes, Luck of the Draw scholarships and more!*

## Manager's Comments

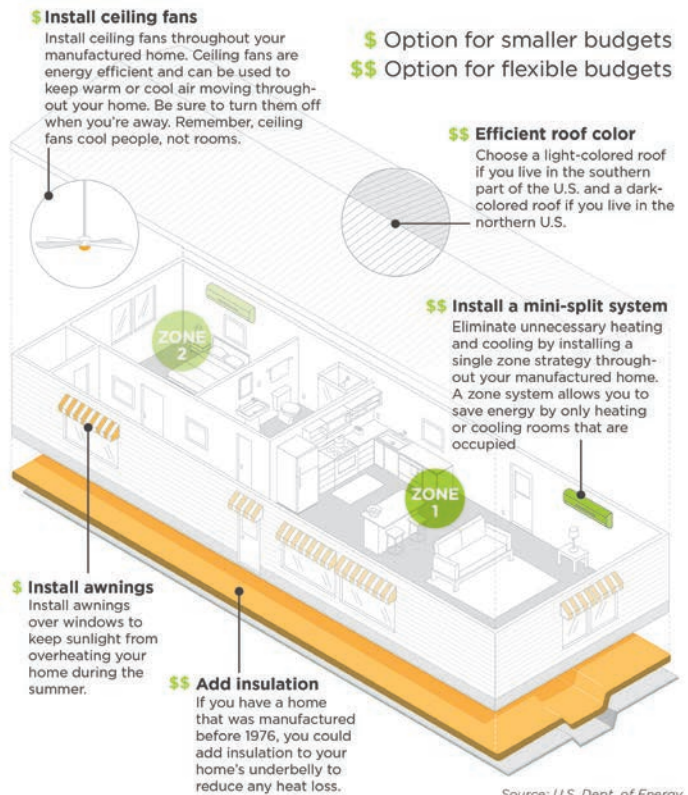
By Tim Stephens

If you took a boat to a Montana lake or river this summer, you were likely subject to an inspection before being allowed to launch. This is a new rule that is designed to help defend our lakes and streams against an infestation of Zebra Mussels. During this year's legislative session, Montana's leadership determined that this matter required immediate action, and subsequently passed the Aquatic Invasive Species Act. It was also determined that the state's general fund would *not* be the funding source. In addition to several fees to sportsmen and recreationalists, it was decided that a portion of the funding should come from the utilities that receive 50% or more of their power supply from hydroelectric generation. These utilities will be charged a flat fee each quarter for the next eight quarters, with the first payment due by the end of October 2017. The fees to hydroelectric power producers and electric utilities will amount to just over half of the approximately \$14 million intended to fight the spread of these mussels. These fees are designed to be bridge funding while a long term solution can be developed. The funds will be used for the decontamination of watercraft, expanding inspections of boats and other watercraft, and boosting monitoring programs around the state.

As a member of Central Montana Electric Power Cooperative (CMEPC), Park Electric is paying a portion of these fees. We feel strongly that defending our lakes and streams from an infestation of this destructive invasive species is beneficial to all Montanans and must take place. However, we are opposed to forcing electric cooperative members to pay for it. Through our statewide organization (MECA), Montana's electric cooperatives were successful in negotiating with lawmakers to ensure that this is considered a temporary fee structure which will expire in two years. There will be an extensive article on this issue in next month's Rural Montana magazine. Be sure to check it out.

## Heating and Cooling Tips for Manufactured Homes

If you own a manufactured home, take measures to ensure you have an efficient heating and cooling system. You can also make simple improvements that save energy and make your home more comfortable.



## "Sparkling Conversations"

Do you have questions about your power? How about the new Livingston substation? Park Electric would like to visit with you and address your questions and concerns.

**General Manager, Tim Stephens,  
District 3 Trustee Craig Yost  
and District 4 Trustee Brad Hanson**  
will be at the  
**Park Electric Offices**  
**Tuesday, September 12th at 9am**

Livingston and Clyde Park members are encouraged to join us for coffee, a snack and some good conversation.

**We hope to see you there!**